

# The PSO APP Goes Mobile for Follow-Up Interviews



iPhone & Android



PSO Goes Mobile





## The PSO APP Goes Mobile

- The Mobile PSO App
  - allows users to access the PSO Follow-Up Interview from an iPhone or Android device.
  - enables users to conduct interviews “on-the-go”, meeting former students or their designees.
- Directions for accessing the App on an Android Phone or iPhone are on the following pages.
- Screenshots show the process for adding the App to an iPhone

## Add the PSO Mobile App to Your iPhone Home Screen

- **Open Safari** and navigate to the PSO Web Application
- <https://district.ode.state.or.us/apps/login/>
- **Tap the Share button** (square with an arrow pointing up) at the bottom of the screen
- **Scroll down** in the share menu and tap "**Add to Home Screen**"
- **Edit the name** if desired (it will default to the website name)
- **Tap "Add"** in the top right corner
- The PSO Web App icon will now appear on your home screen

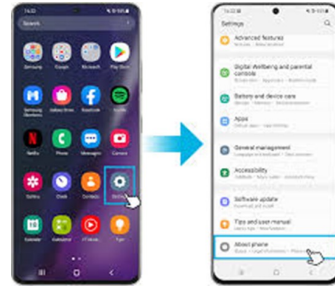


PSO Goes Mobile

# For Android Users

## Method 1: Chrome Browser

1. Open Chrome and navigate to the PSO Web Application
2. Tap the three dots menu (⋮) in the top right corner
3. Tap "Add to Home screen"
4. Edit the name if desired
5. Tap "Add"
6. The PSO Web App icon will appear on your home screen



## Method 2: Alternative Android Browsers

1. Open your browser and navigate to the PSO Web Application
2. Tap the browser menu (usually three dots or lines)
3. Look for options like "Add to Home screen," "Install," or "Create shortcut"
4. Follow the prompts to add the shortcut
5. The icon will be added to your home screen

---

# Troubleshooting

## Can't find the Add to Home Screen option?

- Make sure you're using a supported browser (Safari on iPhone, Chrome on Android)
- Some websites need to be fully loaded before the option appears
- Try refreshing the page and looking again

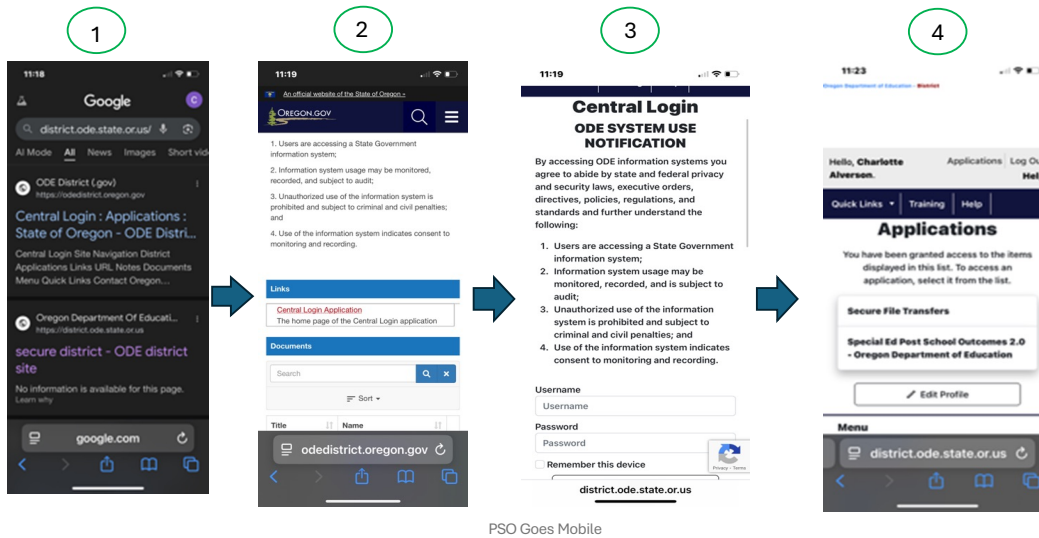
## Icon doesn't appear on home screen?

- Check if it was added to a different home screen page
- On Android, check your app drawer - it might be listed there instead



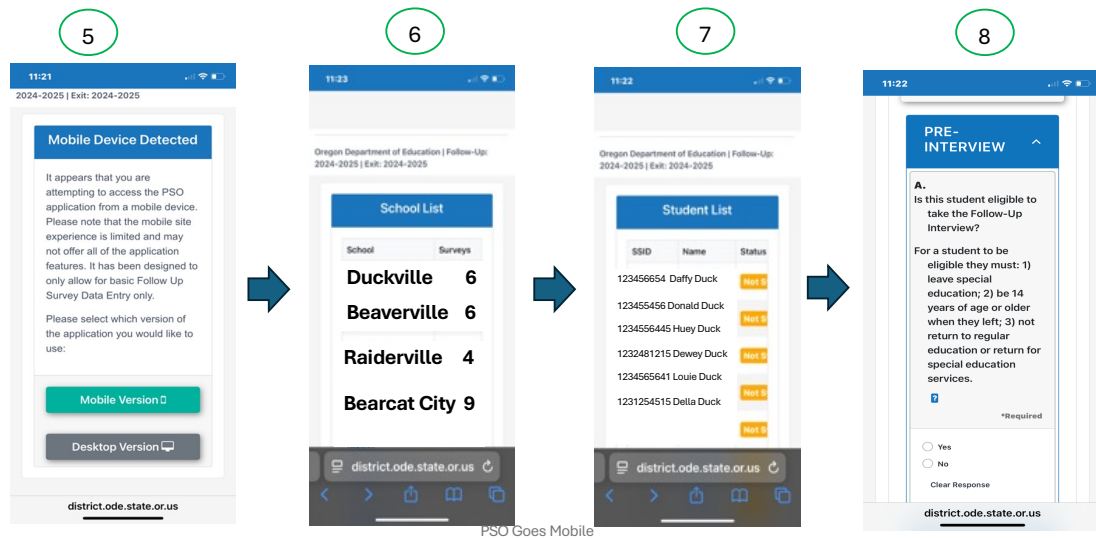
PSO Goes Mobile

# PSO Mobile App: iPhone Screenshots



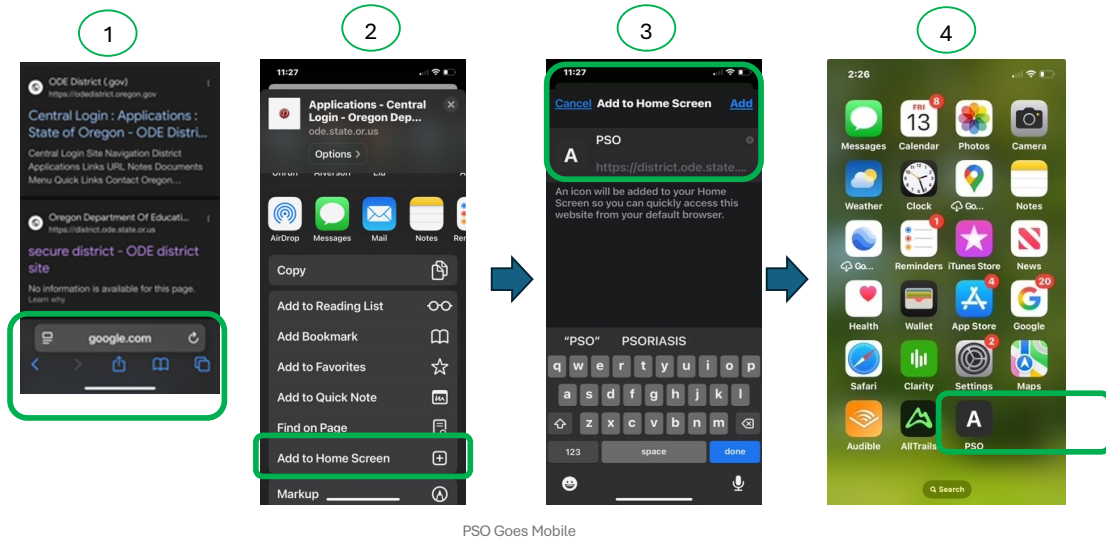
1. **Open Safari** and navigate to the PSO Web Application <https://district.ode.state.or.us/apps/login/> and select the Central Login: Application from the list.
2. Select the Central Login Application link on the Oregon.gov website.
3. Enter your username and password.
4. Select Special Ed Post-School Outcomes 2.0 – Oregon Department of Education

## Access PSO App on Your Phone: Screenshots



5. Once in the App, select the Mobile Version
6. Select the appropriate School, if there is more than one school in the district
7. Select the appropriate student
8. Continue with the App.

## Add an icon to your home screen to quickly access the Follow-Up Interview



1. After you open the Central Login, tap the Share button (square with an arrow pointing up) at the bottom of the screen
2. Scroll down to “Add to Home Screen”
3. Rename the App if you want to; otherwise, it will default to the URL and Click “Add” (top right corner) to put an icon on the home screen
4. Locate the App on your home screen

## Thank you! Be in Touch with Us



- Shava Feinstein  
[Shava.Feinstein@ode.oregon.gov](mailto:Shava.Feinstein@ode.oregon.gov)
- Charlotte Alverson  
[calverso@uoregon.edu](mailto:calverso@uoregon.edu)
- Cindy Post  
[cpost3@uoregon.edu](mailto:cpost3@uoregon.edu)
- ODE Data Team email:  
[ode.oss-datateam@ode.state.or.us](mailto:ode.oss-datateam@ode.state.or.us)
- UO Support email: [psu@uoregon.edu](mailto:psu@uoregon.edu)



PSO Goes Mobile